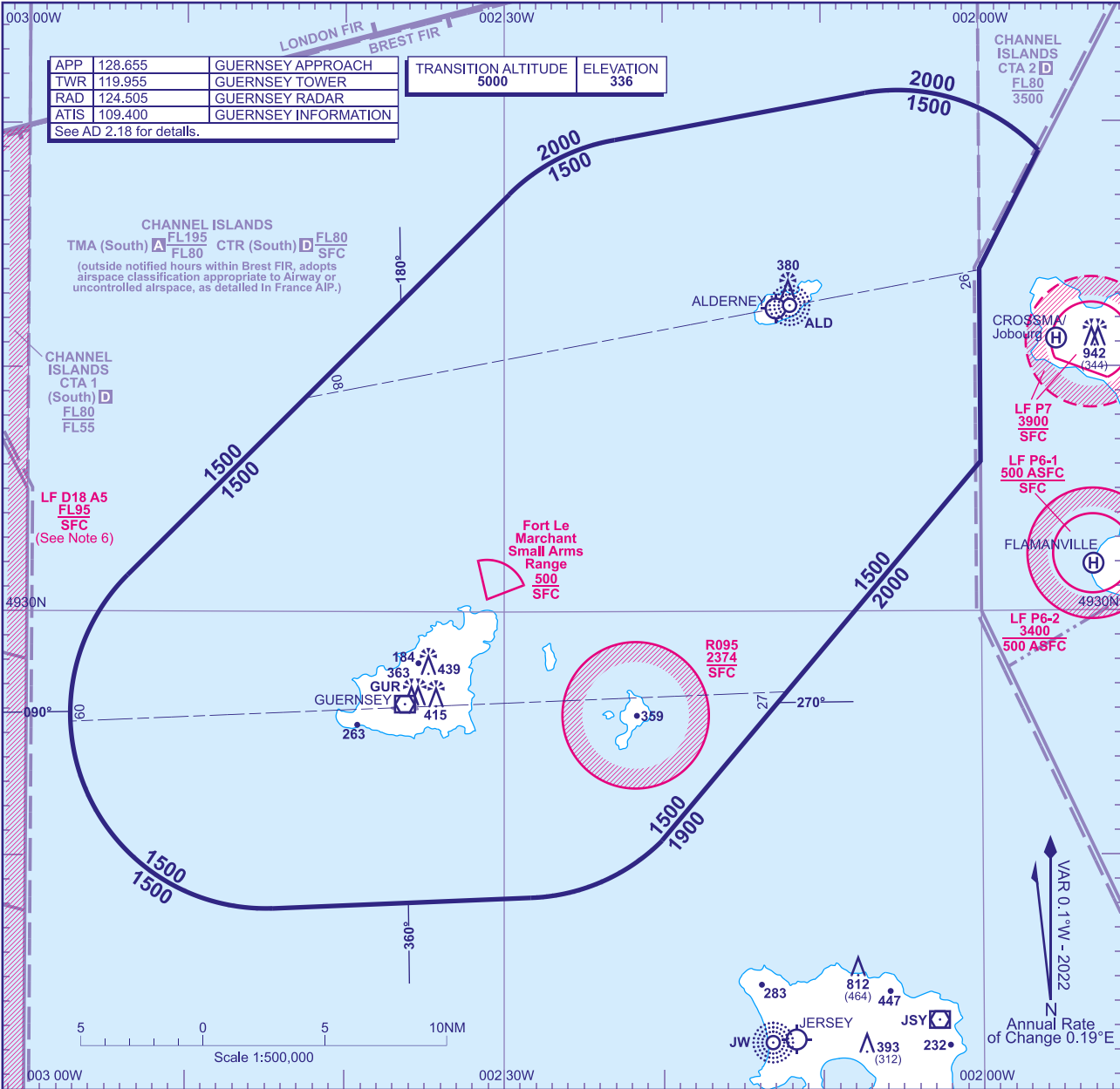


ATC SURVEILLANCE MINIMUM ALTITUDE CHART - ICAO

BEARINGS, TRACKS AND RADIALS ARE MAGNETIC
ELEVATIONS IN FEET AMSL 812
ELEVATIONS IN FEET AGL (464)

GUERNSEY



MINIMUM INITIAL ALTITUDE

Within the ATC Surveillance Minimum Altitude area the minimum initial altitude to be allocated by the approach surveillance controller is **1500** in the sector defined by the lateral limits; 493129N 0025341W - 494705N 0022941W thence clockwise by an arc of a circle radius 8NM centred on 494125N 0022058W to 494919N 0022301W - 495113N 0020710W thence clockwise by an arc of a circle radius 8NM centred on 494320N 0020510W to 494850N 0015613W - 494401N 0020000W - 493607N 0020000W - 492038N 0022007W thence clockwise by an arc of a circle radius 8NM centred on 492618N 0022846W to 491818N 0022821W - 491751N 0024431W thence clockwise by an arc of a circle radius 8NM centred on 492551N 0024458W to 493129N 0025341W.

OUTSIDE THE DESIGNATED ATC SURVEILLANCE MINIMUM ALTITUDE AREA

The minimum altitude to be allocated by the approach surveillance controller will be either the Minimum Sector Altitude, or **1000** above any fixed obstacles:
a) within 5NM of the aircraft*, and
b) within the sector 15NM ahead of and within 20° either side of the aircraft's track*.

*When the aircraft is within 15NM of the radar antennae, the 5NM in a) and the 15NM in b) may be reduced to 3NM and 10NM respectively.

LOSS OF COMMUNICATION PROCEDURES

Initial Approach

Continue visually or by means of an appropriate approved final approach aid. If not possible proceed at **2000**, or last assigned level if higher to **GUR VOR**†.

Intermediate and Final Approach

Continue visually or by means of an appropriate final approach aid. If not possible follow the Missed Approach Procedure to **GUR VOR**†.

† In all cases where the aircraft returns to the holding facility the procedure to be adopted is the Radio Failure Procedure detailed at ENR 1.1.3.

GENERAL INFORMATION

1. Levels shown are based on QNH.
2. Only significant obstacles and dominant spot heights are shown.
3. The minimum levels shown within the ATC Surveillance Minimum Altitude Area are in conformance with the Standard European Rules of the Air - SERA.5015.
4. Minimum Sector Altitudes are based on obstacles and spot heights within 25NM of the Aerodrome Reference Point.
5. Controlled airspace with a base in excess of **5000** or FL55, as appropriate, is not shown.
6. **LF D18 A5** SFC-FL95, except for within CHANNEL ISLANDS CTA-1 (South) and TMA (South) when active.
7. **This chart should only be used for the cross-checking of assigned altitudes whilst in receipt of an ATC Surveillance service.**